



Our Mission and Vision

助力设计师创造伟大建筑

**HELP THE
DESIGNER TO
CREATE GREAT
BUILDINGS**



激活 Windows
转到“设置”以激活 Windows。

CATALOG - HANDRAIL CASES



INTERIOR

- stainless steel round tube handrails with glass
- satin polish
- commercial building application





INTERIOR

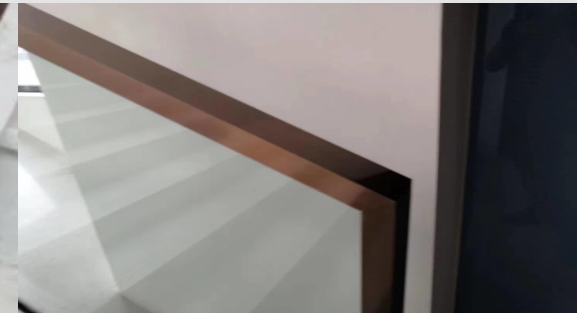
- stainless steel round tube handrails with glass and flat bar posts
- satin polish
- commercial building application





INTERIOR

- stainless steel square tube handrails with glass
- hairline PVD bronze color
- commercial building application





INTERIOR

- stainless steel square tube handrails
 - hairline PVD gold color
 - commercial building application
- stainless steel oval tube handrails
 - bead blasted PVD bronze color
 - commercial building application





INTERIOR

- stainless steel round tube handrails and flat bar posts
- mirror polish PVD gold color
- shopping mall application





INTERIOR

- stainless steel round tube handrails with glass
- satin
- shopping mall application





INTERIOR

- stainless steel round tube handrails with glass and flat bar posts
 - hairline antique brass with stamping pattern
- shopping mall application





INTERIOR

- stainless steel round tube handrails with glass
- satin PVD bronze color with anti-finger print
- shopping mall application





INTERIOR

- stainless steel round tube handrails and balustrades
- hairline PVD gold color
- hotel lobby application





INTERIOR

- stainless steel round tube handrails and balustrades
 - mirror polish
 - hotel lobby application





INTERIOR

- stainless steel square tube handrails
- hairline PVD zirconium color
- hotel lobby application
- stainless steel square tube handrails
- hairline PVD coffee color
- hotel lobby application





INTERIOR

- stainless steel round tube handrails with glass
 - mirror polish
 - hotel corridor application





INTERIOR

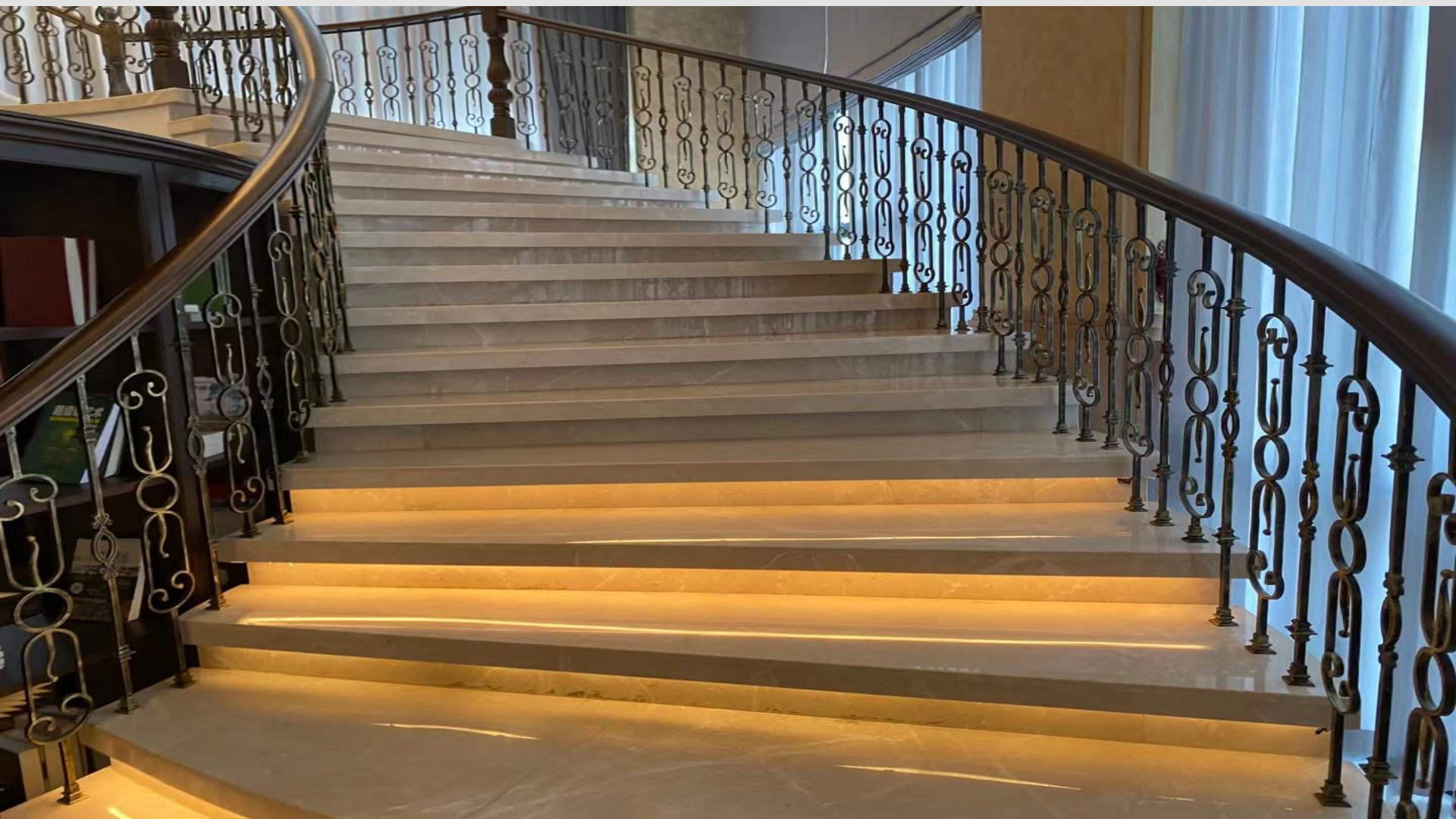
- stainless steel round tube handrails with glass
- satin PVD bronze color with anti-finger print
- hotel corridor application





INTERIOR

- stainless steel round tube handrails and balustrades
- satin
- villa application





INTERIOR

- stainless steel round tube handrails with glass
- mirror polish
- villa application





INTERIOR

- stainless steel square tube handrails and balustrades
- hairline antique brass with stamping pattern
- villa application





INTERIOR

- stainless steel round tube handrails with glass and flat bar posts
- satin
- metro application





INTERIOR

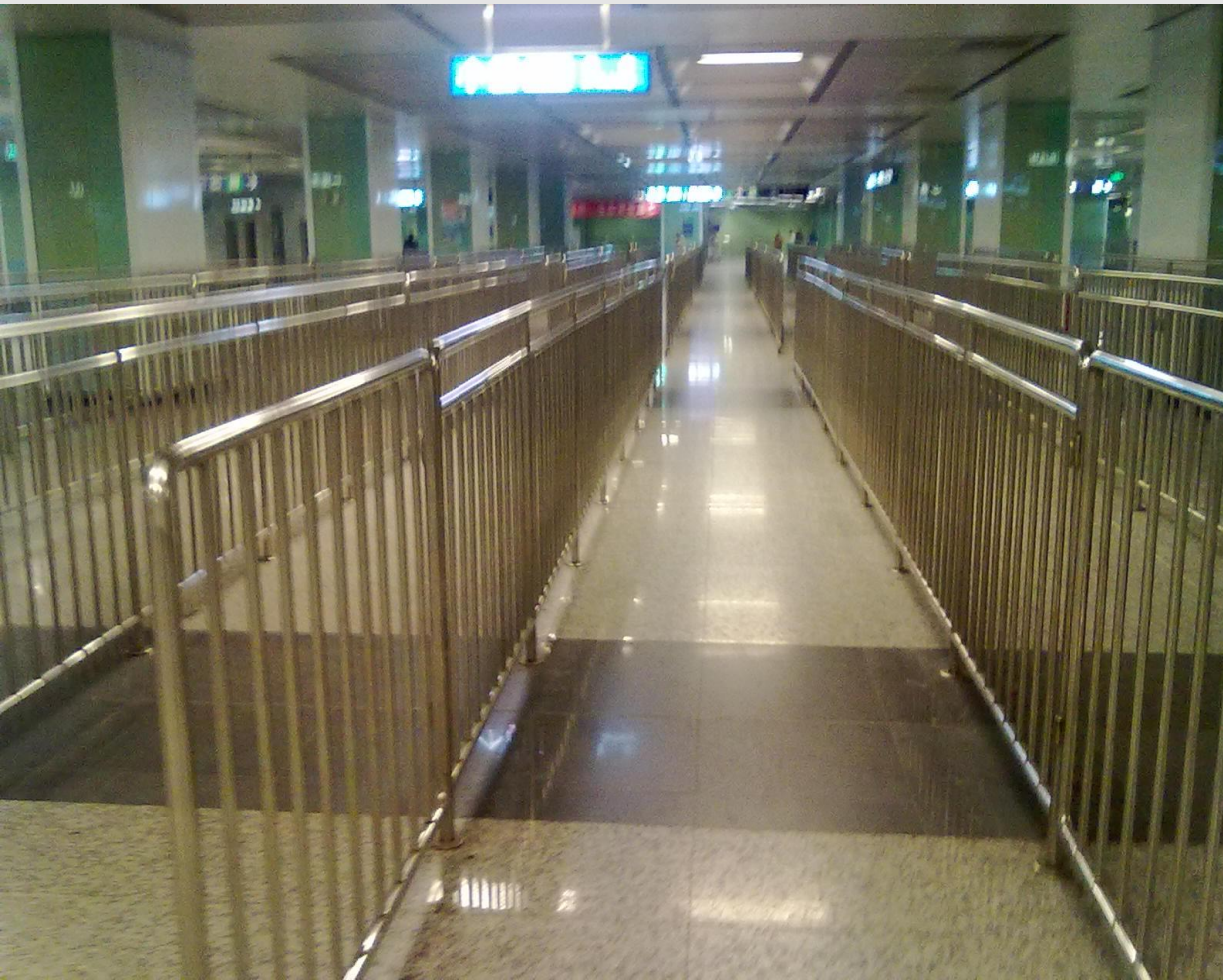
- stainless steel square tube handrails with glass and flat bar posts
- satin
- metro application





INTERIOR

- stainless steel round tube handrails and balustrades
 - satin
- metro application





INTERIOR

- stainless steel round tube handrails with glass and flat bar posts
 - satin
 - metro





INTERIOR

- stainless steel round tube handrails with glass and flat bar posts
- satin
- metro application





INTERIOR

- stainless steel round tube handrails with glass and flat bar posts
- satin
- airport waiting room application





INTERIOR

- stainless steel square tube handrails and punching balustrades
 - hairline
- G-series high-speed train application





EXTERIOR

- stainless steel round tube handrails
- satin polish with anti finger print
- metro application





EXTERIOR

- stainless steel round tube handrails with glass and flat bar posts
- satin
- commercial building application





EXTERIOR

- stainless steel square tube handrails and balustrades
 - hairline PVD bronze
- commercial building application





EXTERIOR

- stainless steel round tube handrails with glass and flat bar posts
 - satin and hairline
- commercial building application





EXTERIOR

- stainless steel round tube handrails with flat bar posts
- satin
- balcony application





EXTERIOR

- stainless steel round tube handrails with glass and flat bar posts
- hairline
- platform bridge application





EXTERIOR

- stainless steel flat bar handrails and balustrades
- hairline
- stairs





EXTERIOR

- stainless steel round tube handrails with glass and flat bar posts
- satin and hairline
- villa application





EXTERIOR

- stainless steel round tube handrails and balustrades
 - satin
- roadway and platform bridge application





EXTERIOR

- stainless steel round tube handrails and balustrades
- satin and hairline
- garden application





EXTERIOR

- stainless steel round tube handrails and balustrades
- satin
- green belt application





SPECIFICATION

Grade	304, 316L, 201
Type	round tube, square tube, oval tube, flat bar, wire mesh, punching panel, etc.
Thickness	1.2-10mm
Width	900-6000mm
MOQ	200 meters
Base Surface	mirror, satin, hairline, bead blasted, vibration
Color	gold, champagne, black, coffee, bronze, rose gold, antique, chemical, anti finger print, etc.
Package	fumigation wooden packages
Delivery Time	30 days

Contact Information

Email: xinling@xinlingbd.com
Tel: 0086-10-51077439
Website: www.xinlingbd.com
Wechat: kritin11t

